

Peg-Pérego

USA

Instructions for use **EN**

PRIMO VIAGGIO SIP 5-70
convertible

⚠ WARNING:

Do not install or use this child restraint until you read and understand all instructions in this manual. To avoid serious injuries to your child, follow the instructions carefully and be sure to buckle your child using the 5-point harness.

**Weight limits in
rear-facing mode:**
5-45 lbs (2.3 - 20.4 kg)

**Weight limits in
forward-facing mode:**
22-70 lbs (10 - 31.8 kg)
maximum height:
49 inches (125 cm)

Table of Contents

Introduction	page 4
⚠ Warning	page 5
Safety information	page 7
Safety features	page 8
Registration form	page 10
Your child restraint	page 12
Installing your child restraint in a vehicle:	
• Vehicle attachment design and compatibility	page 13
• Latch System	page 14
• Vehicle Seatbelt	page 15
• Non compatible vehicle belt designs	page 22
• Tether Strap	page 23
• Weight and dimension range	page 26
• Proper levelling of child restraint in rear facing mode	page 27
Installing your child restraint in a vehicle - Rear Facing mode:	
• REAR FACING mode using Latch System	page 28
• REAR FACING mode using lap/shoulder belt (Type II)	page 31
• Use of a locking clip	page 33
• REAR FACING mode using lap belt (Type I)	page 34
• Using the tether in Rear Facing mode	page 37

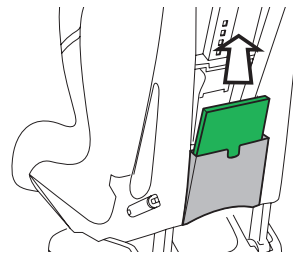
Table of Contents

Installing your child restraint in a vehicle - Forward Facing mode:	
• FORWARD FACING mode using Latch System	page 39
• FORWARD FACING mode using lap/shoulder belt (Type II)	page 42
• FORWARD FACING mode using lap belt (Type I)	page 44
• Using the Tether in Forward Facing mode	page 46
Installing your child restraint in an aircraft	page 47
Securing your child into the child restraint	page 49
• Harness use and adjustment	page 49
• Crotch strap adjustment	page 54
• Infant filler cushion	page 55
Cleaning and maintenance	page 56
How to tell if the seat has been in a crash	page 61
Replacement Parts	page 64

Introduction

Thank you for choosing a Peg Perego Primo Viaggio SIP Convertible. As with any other PegPerego product, your Convertible has been designed and certified by a dedicated team of engineers inside Peg Perego Research and Development Department. Your Convertible has been manufactured and assembled in a Peg Perego plant under certified quality procedures and using high quality materials from certified suppliers. As with every child restraint, Primo Viaggio Convertible is used with a child inside a vehicle, travelling fast on highways or slow in the chaotic traffic of today's cities. This means that you need to use this car seat as a concerned parent, driving carefully when you have a child on board but also, before this, taking your time to explore the child restraint, knowing all the features it has, the different possible uses, the proper and best installations. Go through this manual entirely, keeping your new child restraint in sight, checking every point and understanding it. Install the child restraint in your vehicle taking the necessary time and making fitting trials before using it with your child. Once you have read the manual, store it again in its proper pocket. This will ensure that everybody looking after your child and using this seat will be able to look for help in this manual.

Should you see any malfunctioning feature, after taking the necessary familiarization or if you see broken parts, do not hesitate to call Peg Perego Customer Service @ 1-800-671-1701 for help. Now that you know your new Primo Viaggio SIP Convertible, you are ready to enjoy safe and happy journeys with your family and your children.



Warning

- When using the Primo Viaggio Convertible in rear facing mode, never place it in vehicle seats equipped with an active air bag. Death or serious injuries can occur if an air bag hits the unit. Check your vehicle owner's manual for child restraint and vehicle seat compatibility.
- According to accident statistics, children are safer when properly restrained in the rear seating positions.
- Do not install or use this child restraint until you read and understand all the instructions in this manual and the labels on the product. To avoid serious injuries to your child, follow the instructions carefully. Keep the instruction manual in the dedicated pocket for future reference.
- Your child could be seriously injured if you do not follow instructions and warning labels correctly.
- This child restraint meets or exceeds all applicable Federal Motor Vehicle Safety Standard 213 requirements for use in motor vehicles and aircraft.
- Always restrain your child with the 5-point integral harness provided with the product. Be sure that the buckle is correctly latched.

Snugly adjust the belt around the child's body making sure that the belt lies flat with no slack. Use the chest clip to be sure that the belts are in the correct position.

- Primo Viaggio SIP Convertible can be used in two main modes: rear facing, when the child sitting in the restraint looks at the back of the vehicle; forward facing when the child sitting in the restraint looks at the front of the vehicle.
- Use Primo Viaggio SIP Convertible in rear facing mode with children weighing 5 – 45 lbs (2.3 – 20.4 kg); in forward facing mode with children weighing in the range 22 – 70 lbs (10 – 31.8 kg) and having a maximum height of 49 inches (125 cm).
- Keep your child in rearward facing mode as long as possible: NEVER use Primo Viaggio Convertible in forward facing mode if baby weighs less than 22 lbs (10 kg).
- Primo Viaggio SIP Convertible can be secured to your vehicle by means of lap or lap/shoulder belts available in your vehicle. However, not all available models of seatbelts are approved for use with this product. Refer to the dedicated section in this manual for further details.

Warning

- Primo Viaggio SIP Convertible can be secured to your vehicle by means of lower universal anchorage system (LATCH) in conjunction with a top tether, both provided with this product. Refer to the dedicated section in this manual for installation details and check your vehicle owner's manual for further details.
- When securing the child seat into the vehicle, make sure that the seat belt or LATCH stay locked and tight during normal driving. Refer to the dedicated sections in this manual for further details.
- This child restraint is designed to be installed on front facing vehicle seats only. Never use on seats looking sideways or rearward facing. Do not use in cars with door-mounted or motorized shoulder belts. Read your vehicle owner's manual for additional information.
- When the child restraint is installed on the vehicle seat, check that vehicle belts or LATCH and top tether straps are snugly fitted around the child restraint structure and that there is no slack. An incorrectly fastened child restraint may result in an additional excursion or deceleration on your child in case of an accident.
- Complete and send in the registration form provided with this product right away. In case of an accident: if this car seat is involved in a car accident, it may be no longer safe for use. You may need to get a new unit. Call customer service @ 1-800-671-1701 for help.
- Seat covers and pads provided with this product are part of the product and the certification program. The use of non approved covers or other accessories are not recommended .
- EPS components (white soft foam located below the upholstered covers) are integrated in the product as safety related parts and should never be removed or severely damaged.
- EPP component (black soft part located behind the shell) is integrated in the product as safety related part and should never be removed.
- Secure this child restraint in the car even when not occupied. This child restraint is a heavy object that could cause severe damage to other occupants in case of an accident.
- Do not lift this child restraint by harnesses to avoid unnecessary wear or stress on the webbing. Lift it by the hard structure.
- Keep fingers away from moving parts.

Safety information

- When placing your child in the seat, make sure that bulky jackets or covers are removed. This will ensure that the harness is used correctly.

- Use only with children who weigh between 5 and 70 lbs (2.3 and 31.8 kg).

- Do not leave your child unattended in the car, even for a short period. He/she could get tangled in the straps and be seriously injured or could move or tip the child restraint.

- Do not leave the child restraint under direct sunlight for a prolonged time. The seat may become very hot and burn your child's skin.

- When not in use, store the product, away from light, moisture, excessive heat or cold.

- Be sure the child restraint is properly levelled.

If the seat reclines too much, your child can be injured or ejected from the seat. If the seat is too upright, it can cause your child to have breathing problems, which could lead to injury or death.

- Do not place this child restraint on

countertops, tables or soft surfaces. Do not use this unit after seven (7) years from the date of production labelled on the seat.

- Do not try to remove or add parts unless where explained in this manual; do not try to repair this product. In case of damage or defective components, call customer service @ 1-800-671-1701 for help.

- Do not leave loose objects, bags or luggage in the vehicle interior. In case of an accident they could suddenly move causing the occupants to be injured.

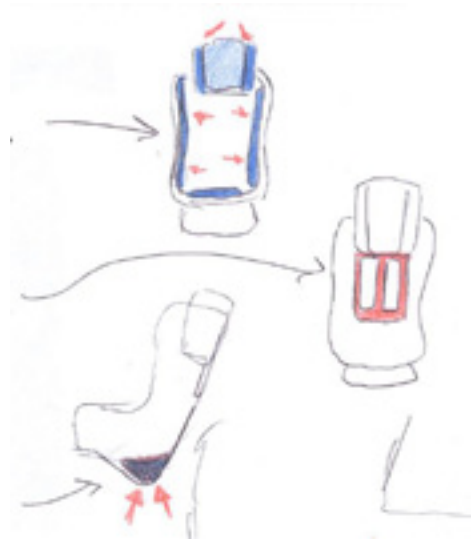
Safety features

Primo Viaggio SIP Convertible is equipped with safety features specifically designed to protect your child in the event of a crash. In case of a severe crash, there are parts of your seat designed to bend or deform. These parts will absorb the crash energy so it is not transferred to your child. Please refer to section "How to tell if your seat has been in a crash" on page 61, for additional information.

EPS: the side of the head wings, the side and the bottom of the shell are covered with a thick layer of low density Expanded Poly Styrene which absorb energy and reduce crash forces. They also provide thermal insulation and give extra comfort when used for long periods of time.

STEEL PLATE: the back of the seat is reinforced with a steel plate that supports the spine, neck and head under the high loads developed in a crash.

SAFE: (Shock Absorbing Foam Element) is an Expanded Poly Propylene (EPP) block located at the bottom of the shell between the hard surface and the harness web. It is designed to deform during a crash in order to reduce compression loads on the occupant shoulders and chest.

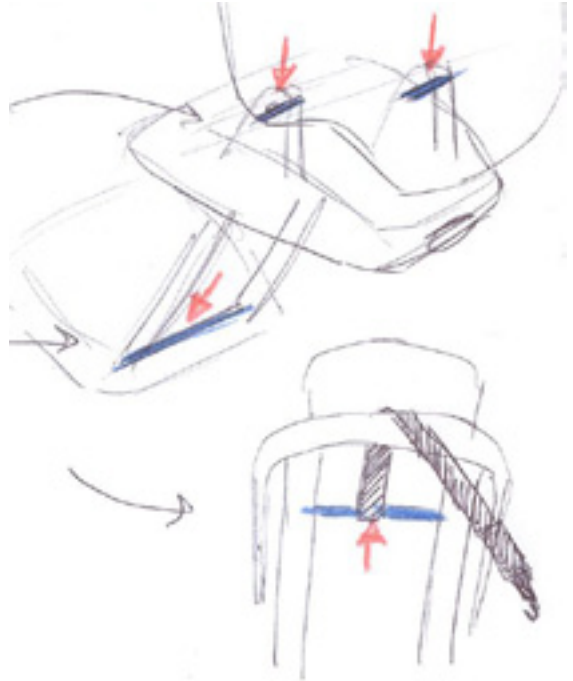


Safety features

PIVOT PINS: the base of the seat is hinged on steel pins that travel into plastic walls during a crash.

REAR ROD: a steel rod in the back of the seat takes compression loads in a crash when the product is used in rearfacing mode.

TETHER BAR: the tether strap that is located on the top of the seat is attached to a bar that bends during a crash.



Registration form

Important! Child restraints could be recalled for safety reasons. You must register this restraint to be reached in a recall. Send your name, address and the restraint's model number and manufacturing date to:

Peg Perego U.S.A., Inc.

3625 Independence Drive

Fort Wayne, IN 46808

Or call 1-800-671-1701 (toll free)

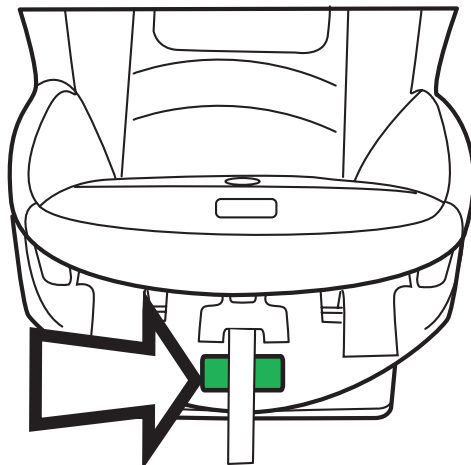
Or register online at

www.carseat-registration.pegperego.com

For recall information, call the U.S. Government's Vehicle Safety Hotline at 1-888-327-4236 (TTY: 1-800-424-9153) Or go to <http://www.NHTSA.gov>

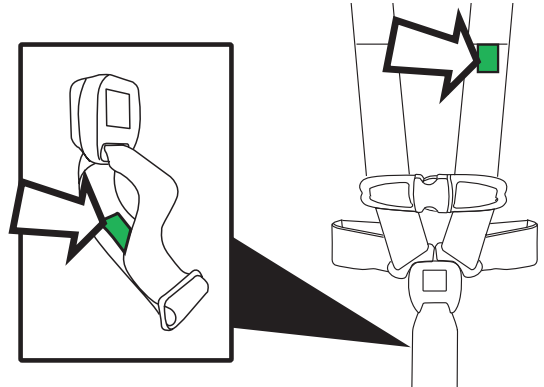
The Registration form is attached to the product cover. Detach the form, fill in and mail to PegPerego. No stamp is needed. We have already paid for it. Should the registration form be missing, please call Customer Service @ 1-800-671-1701 for a replacement form.

Model number, model name, date of manufacturing, etc. are indelibly printed on a label located in the picture shown here.

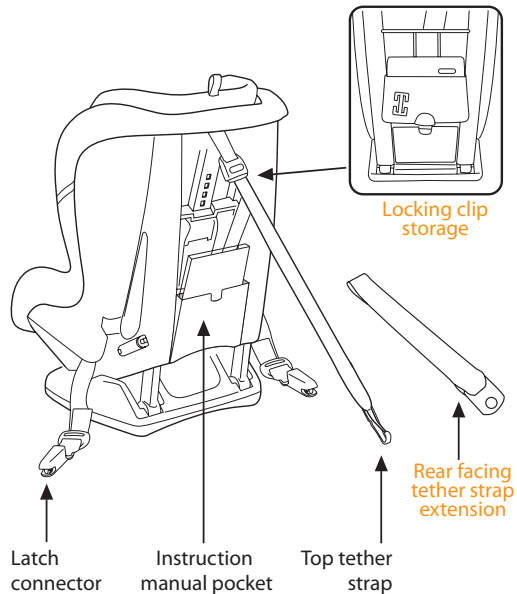
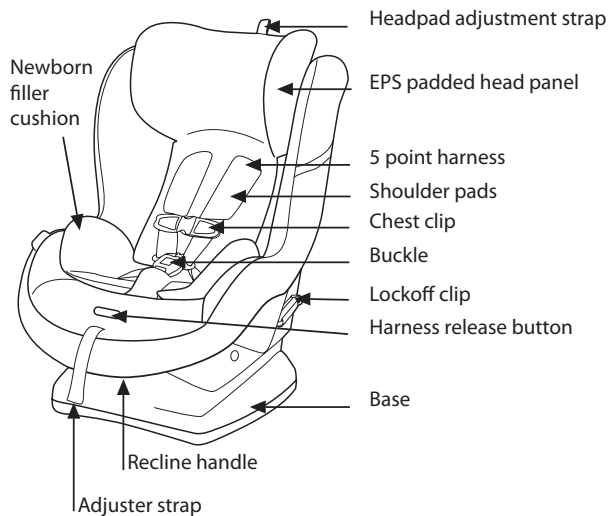


Registration form

Harness serial number is also indelibly printed on the buckle and the webbing and could provide useful information in case of accident or defects. See picture below for location explanation.



Your child restraint



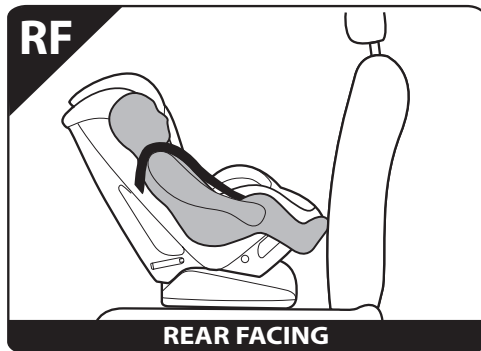
Installing your child restraint in the vehicle

VEHICLE ATTACHMENT DESIGNS AND COMPATIBILITY

Primo Viaggio SIP Convertible is designed to be installed in a vehicle in Rear Facing mode (RF) or in Forward Facing mode (FF). It can be installed using:

- 1) Latch System
- 2) Vehicle Seatbelts
- 3) Additionally your seat is equipped with a Top Tether to be attached to a suitable Top Tether anchorage point. PegPerego always recommends use of a Top Tether to increase safety and stability of the child seat.

Details are described in the following pages. Peg Perego recommends that caregivers have their car seat installation checked by a certified child passenger safety technician. These technicians are trained for this specific purpose and are available in your area. To locate a technician go to the website at <http://www.nhtsa.gov/cps/cpsfitting/index.cfm>



Installing your child restraint in the vehicle

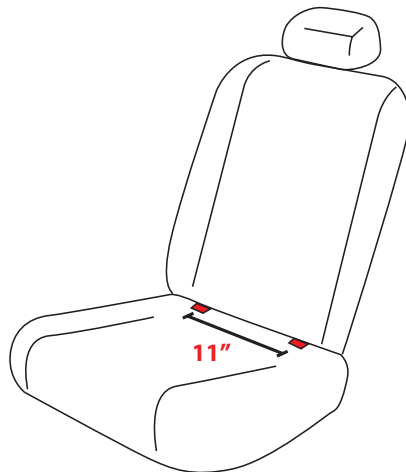
1) LATCH SYSTEM: Primo Viaggio SIP Convertible is equipped with latch connectors. They are located at each side of the child seat that attach to anchors located at the junction of the seat and backrest in your vehicle. There are two anchors for each seating position and they are spaced by about 11" (28 cm).

They may be visible or slightly recessed into the vehicle upholstery and can be protected by plastic or fabric shields. The LATCH anchor can be located by this symbol:



Check your Vehicle Owner's Manual to find the LATCH anchor locations in your vehicle.

IMPORTANT NOTE: Unless where specified differently, lower anchors (LATCH) may be used for a child whose weight is less than 40 Lbs. However most lower anchors can withstand much greater forces. Please, check your vehicle owner's manual or contact the vehicle manufacturer in order to determine what the weight limit is for the use of lower anchors. When the weight of occupant is beyond these limits, vehicle seatbelt must be used to install the child restraint properly and securely.



Installing your child restraint in the vehicle

2) VEHICLE SEATBELTS: this child seat is designed to be installed with vehicle belts. There are many different vehicle belt designs. Unfortunately, some may be unsuitable for a safe installation of Primo Viaggio SIP Convertible. Please read carefully the pages below.

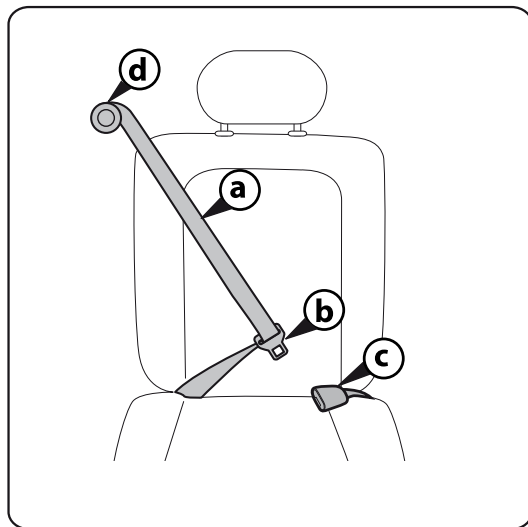
Check your vehicle owner's manual or call Peg Perego Customer Service @ 1-800-671-1701 for additional help.

The most common vehicle belt is composed of a web strap (a), a latch plate (b), a buckle (c) and a retractor (d). A retractor is a spring loaded device that rolls the seatbelt automatically when not in use.

Common retractors are:

Emergency Locking Retractor (ELR) allows the occupant to have free movement while buckled up, but in an emergency situation or crash the retractor instantly locks securing the occupant.

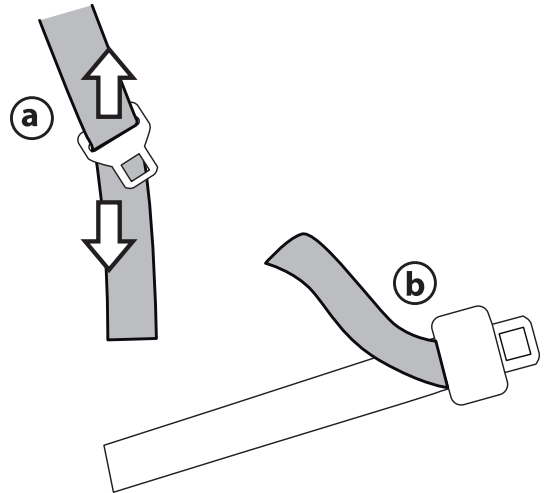
Switchable Locking Retractor (ELR → ALR)
Switches from Emergency Locking Retractor (ELR) to an Automatic Locking Retractor (ALR). This allows the user to lock the retractor at a set position (also called child restraint mode)



Installing your child restraint in the vehicle

used for **securing child seats**. ALR mode is activated by extending the retractor all the way out until a "click" is heard, next let the seat belt (webbing) retract into the retractor to the desired length and stop the belt at that point. The retractor locks and will not let the belt lengthen at that point (only retract). To cancel ALR mode and return the retractor to the ELR mode, just let the retractor retract the webbing all the way back into the retractor.

A latch plate can be a sliding latch plate (a) or a locking latch plate (b). A sliding latch plate is available on lap/shoulder belt only and moves freely along the strap. A Locking latch plate has a mechanism to lock the movement of the plate on the strap.

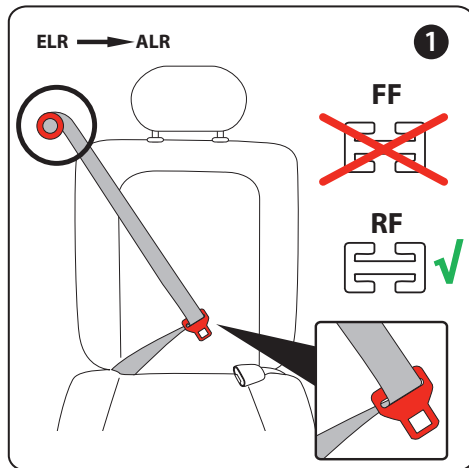


Installing your child restraint in the vehicle

2.1 Lap/shoulder belt (3-point) with Switchable Locking Retractor (ELR → ALR) and free sliding latch plate. This type of seat belt has a latch plate that moves freely along the belt. To activate ALR for child restraint installation, some vehicle models may require to pull the belt all the way out; some other vehicle models may require to pull the belt for a certain length (check vehicle owner's manual for details).

For installation of Primo Viaggio Convertible in rear facing mode, leave the seatbelt in ELR mode and use a locking clip available with your child seat (in rear compartment). Use of a locking clip is explained at page 33. For installation of Primo Viaggio Convertible in forward facing mode, activate ALR mode, then tighten the belt around the seat feeding the belt back into the retractor. The belt will not extend unless you unbuckle the belt and repeat the operation from the beginning. With this installation, use of a locking clip is not required.

Important Note: The lock off clips located on the side of the Convertible seat are used to enhance the stability during normal use. The lock offs are not designed to replace an automatic locking retractor or a locking latch plate. The vehicle belt must be properly tightened to secure the Convertible seat to the vehicle.

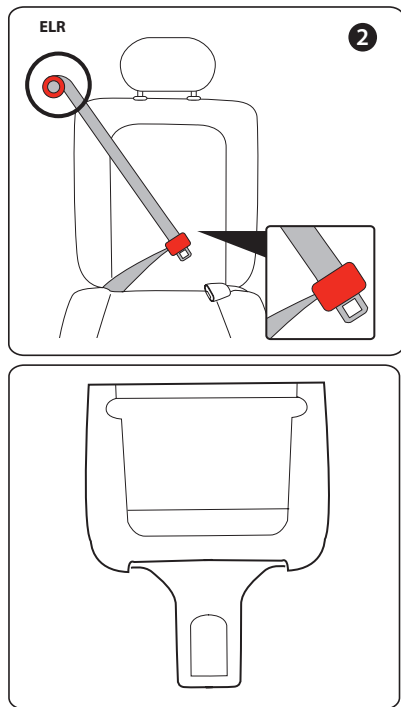


Installing your child restraint in the vehicle

2.2 Lap/shoulder belt (3-point) with Emergency Locking Retractor (ELR) and with a locking latch plate. This type of belt can be adjusted by pulling/releasing the strap at the latch plate adjuster. Please refer to your vehicle owner's manual for details.

Note: Some locking latch plates need to have the web positioned at the correct angle for proper locking. Make sure the latch plate properly locks when installing the car seat with a locking latch plate.

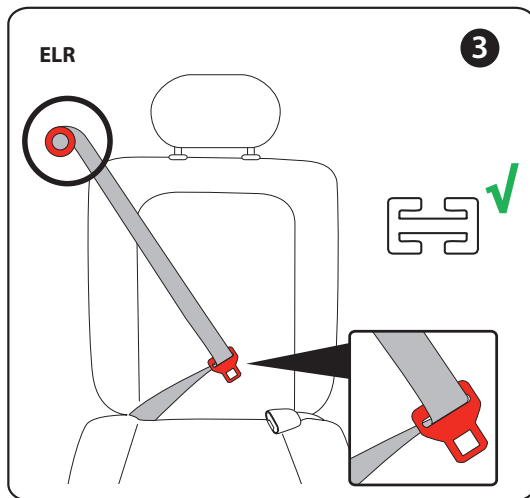
Note: some vehicles are equipped with switchable latch plate that can switch from a sliding type to a locking type. In this specific case, make sure that the latch plate is in a locking mode.



Installing your child restraint in the vehicle

2.3 Lap/shoulder belt (3-point) with Emergency Locking Retractor (ELR) and free sliding latch plate. This type of seat belt has a latch plate that moves freely along the belt; it will only lock in an emergency (sudden stop or crash) so you must use a Locking Clip to secure this type of belt. Refer to page 33 for the proper use of a locking clip. If additional help is needed, consult with a Child Passenger Safety Technician (CPST). To locate a technician go to the website at <http://www.nhtsa.gov/cps/cpsfitting/index.cfm>

Important note: The lock off clips located on the side of the Convertible seat are used to enhance the stability during normal use. They are not designed to replace a locking clip. A locking clip must be used to properly secure the seat with a belt as described above.

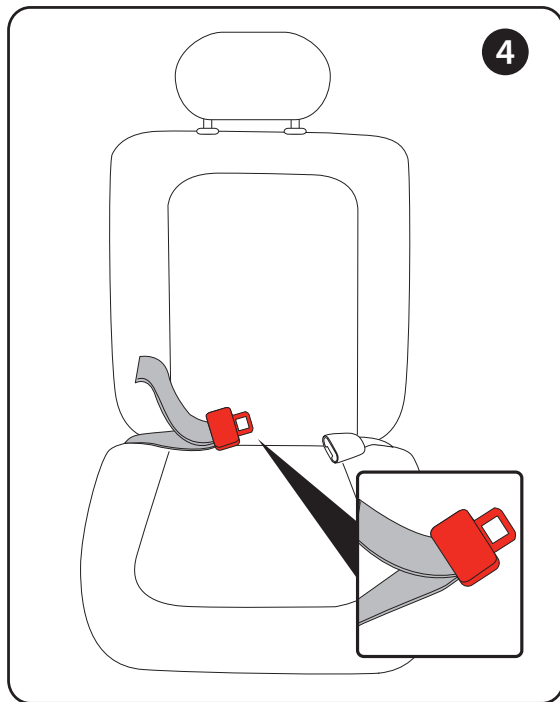


Installing your child restraint in the vehicle

2.4 Lap belt (2-point) with a locking latch plate. This type of belt can be adjusted by pulling/releasing the strap tail at the latch plate.

Some vehicles may have seatbelts with large rigid buckles. These designs may cause the installation to be troublesome and affect stability of the child restraint during normal use. Also, it may cause slack in the belt that may result in poor performance in case of a sudden stop or crash. In this situation, try another seating position in the vehicle or consult your vehicle owner's manual.

Please consult a certified child passenger safety technician for other installation options (www.nhtsa.gov/cps/cpsfitting/index.cfm).



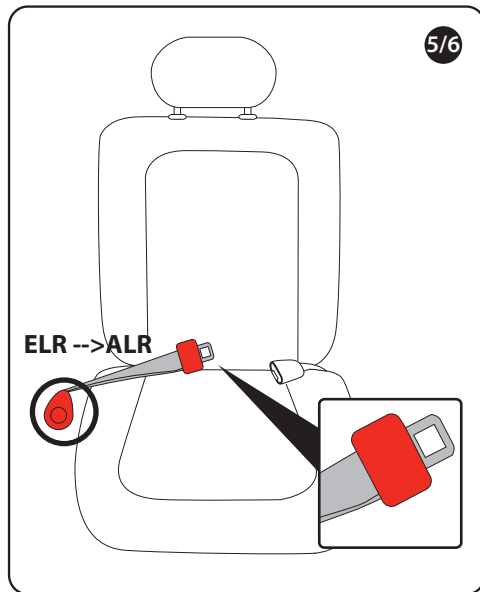
Installing your child restraint in the vehicle

2.5 Lap belt (2-point) with Switchable Locking Retractor (ELR --> ALR). This type of seat belt has a latch plate that is sewn to the end of the belt. To activate ALR retractor for child seats installation, some vehicle models may require to pull the belt all the way through; some other vehicle models may require to pull the belt for a certain length (check vehicle owner's manual for details). Tighten the belt around the seat feeding the belt back into the retractor. The belt will not extend unless you unbuckle the belt and repeat the operation from the beginning.

2.6 Lap belt (2-point) with Emergency Locking Retractor (ELR). This type of seat belt has a latch plate sewn at the end of the belt; it will only lock in an emergency (sudden stop or crash).

Important note: DO NOT USE Primo Viaggio SIP Convertible with this belt or consult a certified child passenger safety technician for

other installation options
(www.nhtsa.gov/cps/cpsfitting/index.cfm).

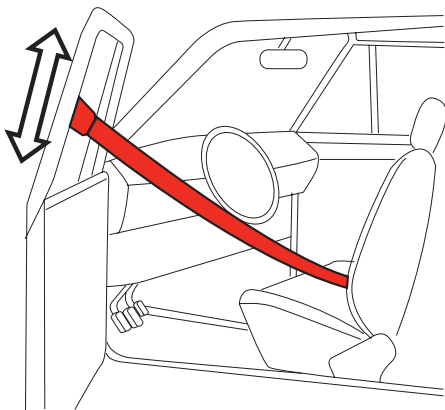


Installing your child restraint in the vehicle

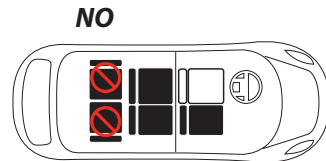
2.7 Non compatible vehicle belt designs

WARNING: do not use Primo Viaggio SIP Convertible with the following vehicle belt design:

1. Lap/motorized shoulder belts.
Belts mounted on the door

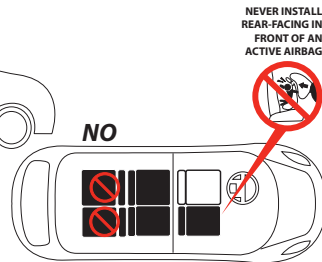


2. Side facing seats



3. Rear facing seats

4. Rotating seat unless tray can be locked in forward facing direction.



For your child's safety, always read your vehicle owner's manual for further information.

Installing your child restraint in the vehicle

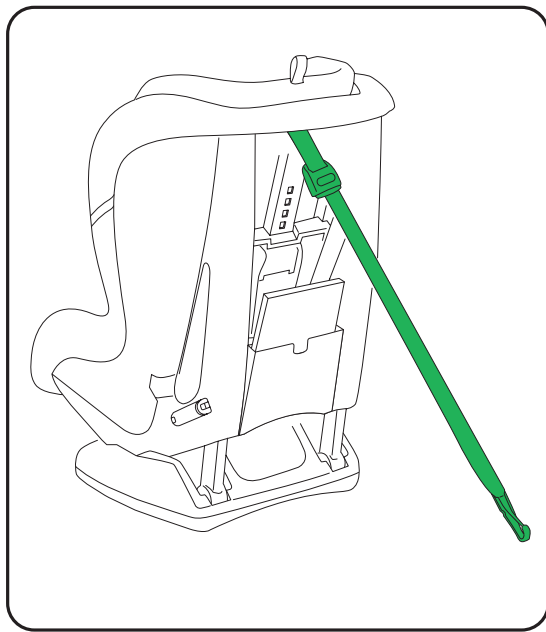
3) TOP TETHER

The top tether is an additional strap attached at the top of the Primo Viaggio SIP Convertible shell equipped with a hook and an adjuster.

Peg Perego always recommends the use of the top tether. It is a device designed to increase stability in normal use and improve safety in an accident.

The top tether has to be connected to a suitable tether attachment points in the vehicle.

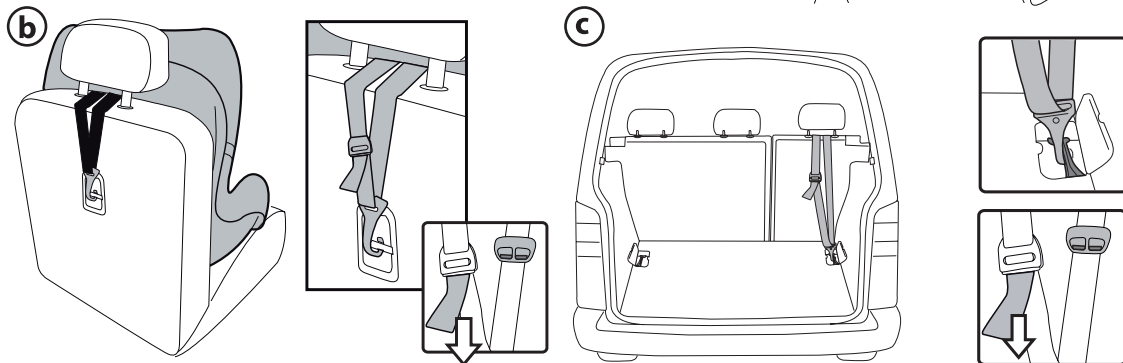
Do not attach the Primo Viaggio Tether to vehicle anchorage points not designed as child restraint tether anchorage points, as this may result in a failure during a crash.



Installing your child restraint in the vehicle

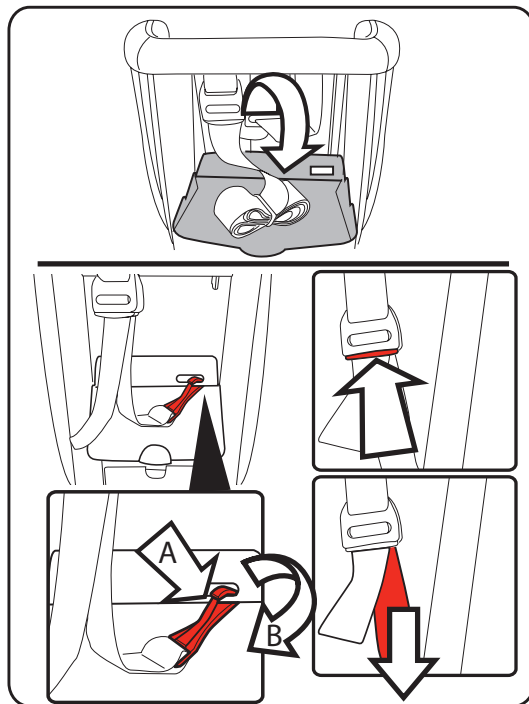
Common locations for top tether attachments are: the rear shelf in sedan type vehicle (a), the back of the seat backrest in minivans (b), the rear compartment in SUVs and other vehicles (c).

To locate the proper points, please refer to your vehicle owner's manual.



Installing your child restraint in the vehicle

To use the tether, open the plastic pouch, detach the hook from its rear attachment. Press on the adjuster button in order to lengthen the strap to the required length. When not in use, keep the tether attached in the plastic pouch. A free hanging metal hook could cause injury during a crash.



Installing your child restraint in the vehicle

WEIGHT AND DIMENSION RANGE

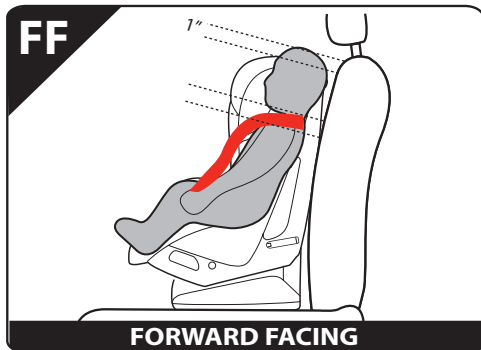
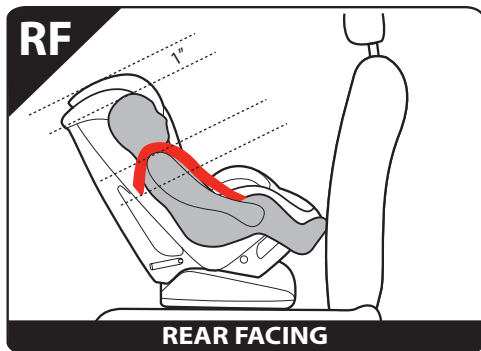
REAR FACING MODE

- Use rear facing with children who weigh between 5 and 45 pounds (2.3 and 20.4 kg).
- Use rear facing if head is at least one inch below headrest edge.
- The correct shoulder position is when shoulder straps are located at or just below shoulder level, as shown in the picture.

Note: The lower 7 head panel positions can be used in the rear facing mode. Positions 8, 9 and 10 should only be used in the forward facing mode. Refer to page 51 for head panel adjustment.

FORWARD FACING MODE

- Use forward facing with children who weigh between 22 and 70 pounds (10 and 31.8 kg).
- Use forward facing if head is no more than one inch above headrest edge.
- The correct shoulder position is when strap slots are located at or just above shoulder level, as shown in the picture.

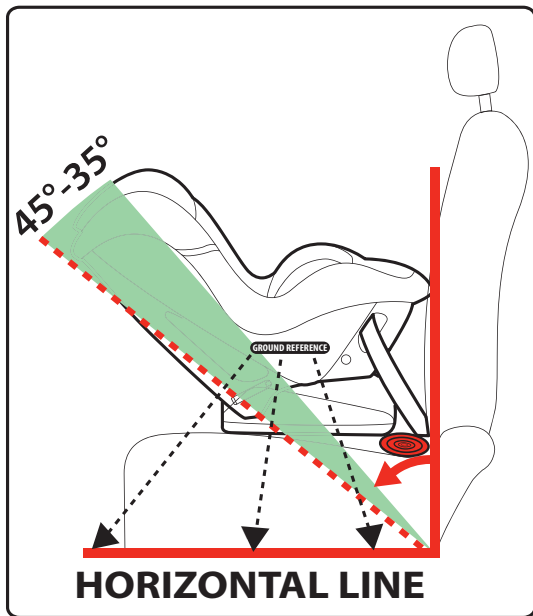


Installing your child restraint in the vehicle

PROPER LEVELLING OF CHILD RESTRAINT IN REAR FACING MODE

When properly installed according to the following sections, the child restraint used in rear facing mode should have a backrest angle of 35° - 45° from vertical. If it is not possible to reach such angle, use a pool noodle or a rolled towel to further recline the seat. Use the line drawn on the product as a reference. When the line is horizontal, the backrest angle will be at 45° with vertical. NOTE: make sure that the angle does not exceed 45° with vertical.

Important! Newborn infants should be properly reclined. If the seat reclines too much, your infant can be ejected from the seat in an accident. If too upright, it can cause breathing problems.



Installing your child restraint in the vehicle - Rear Facing mode

REAR FACING MODE USING LATCH SYSTEM



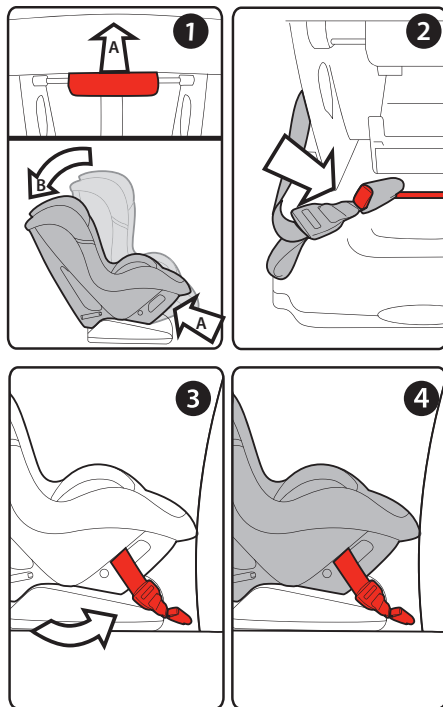
1. Recline the child restraint to the rearfacing position as shown in the picture. To recline the child restraint, pull the handle located below the front edge of the shell (A) as shown in detail. An audible "click" is heard when the seat is properly locked into position.

Note: for easier adjustment, lift the back of the seat slightly with your free hand to remove some weight from the mechanism.

2. Disconnect the latch straps from the storage bar by pushing on the red button and pulling the straps at the same time.

3. Slide the straps toward the front of the child restraint. Check that the straps are not reversed.

4. Lean the reclined seat, unoccupied, on the selected vehicle seat in the rearfacing mode making sure that the front part of the seat touches the vehicle seat backrest.

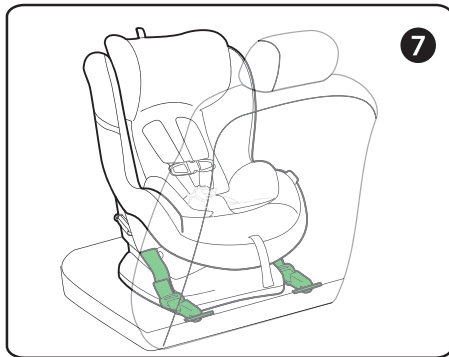
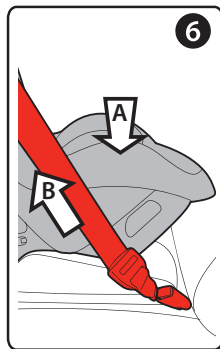
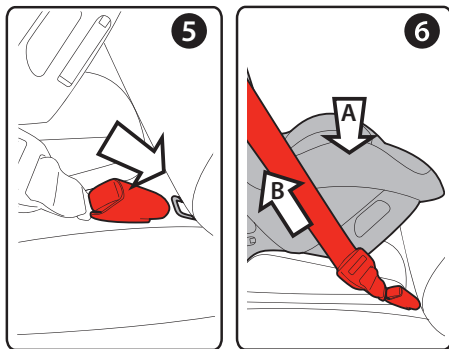


Installing your child restraint in the vehicle - Rear Facing mode

5. Attach the lower connectors to the lower anchors of your vehicle located at the joint line between seat and backrest. Check your vehicle owner's manual to learn what is the best place for your child restraint. When the LATCH straps are connected to the lower anchors, an audible click will be heard. If this is not the case, repeat the operation and double check that the latch is attached and working by trying to pull the lower connector away from the lower anchor.

6. Push down the child restraint (A) into the seat with your own body weight and at the same time pull the strap ends in order to tighten the latch straps (B). Check that the connectors are evenly tightened and that the seat is not leaning sideways.

7. Picture shows the correct strap path when the seat is attached using the LATCH connectors. Make sure the seat is properly leveled as explained on page 27. **Verify that the child restraint is secure. A secure child restraint will not move more than 1 inch near the latch anchors.**



Installing your child restraint in the vehicle - Rear Facing mode

IMPORTANT NOTE: Unless where specified differently, lower anchors (LATCH) may be used for a child whose weight is less than 40 lbs. However most car lower anchors can withstand much greater forces. Please, check your vehicle owner's manual or contact the vehicle manufacturer in order to determine what the weight limit is for the use of lower anchors. When the weight of occupant is beyond these limits, vehicle seatbelt must be used to install the child restraint properly and securely.

Installing your child restraint in the vehicle - Rear Facing mode

REAR FACING MODE USING LAP/ SHOULDER BELT (TYPE II)

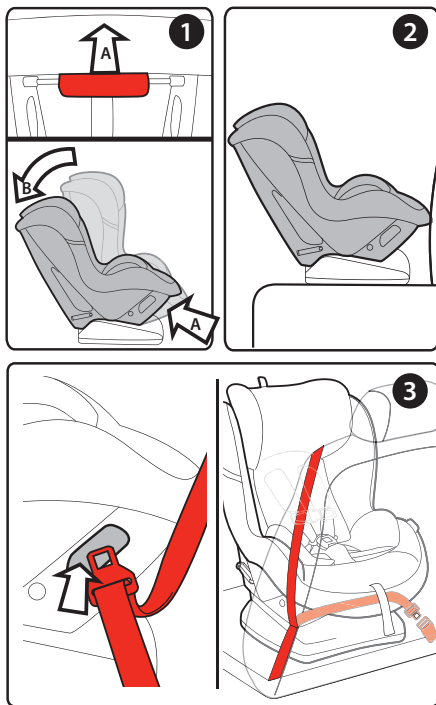
1. Recline the child restraint to the rearfacing position as shown in the picture. To recline the child restraint, pull the handle located below the front edge of the shell (A) as shown in detail. An audible "click" is heard when the seat is properly locked into position.

Note: for easier adjustment, lift the back of the seat slightly with your free hand to remove some weight from the mechanism.

2. Lean the reclined child restraint, unoccupied, on the selected vehicle seat.

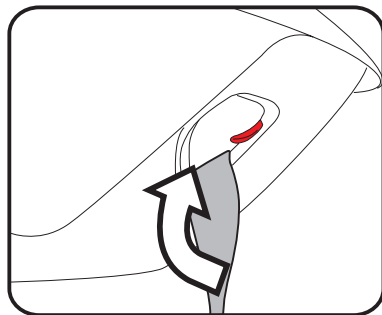
3. Pull the vehicle belt at full available length and thread both the lap and shoulder portion of the belt through the openings under the seat area as shown in the picture.

Note: for easier threading, turn the seat at a 45 degree angle, thread the latch plate through the first opening, reach under the front of the seat and thread through the second opening.



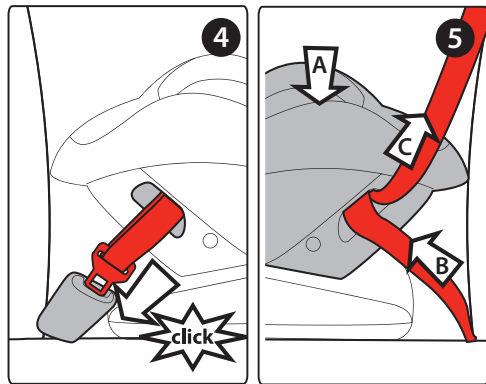
Installing your child restraint in the vehicle - Rear Facing mode

IMPORTANT: check inside the shell openings; verify that the waist position of the belt is placed as shown in the picture.



4. Buckle the vehicle belt and check under the seat that the adjuster strap is not entangled with the vehicle seat belt.

5. Push the child restraint firmly into the vehicle seat and pull the vehicle belt in order to eliminate any slack. Follow the procedure shown in the picture making sure that while the child restraint is pushed down (A), the lap portion of the belt is pulled from the fixed point toward the buckle (B). Then pull the diagonal portion of the belt upwards (C).



Installing your child restraint in the vehicle - Rear Facing mode

6. The picture shows the correct belt path when the child restraint is attached to the vehicle using a lap/shoulder belt. Make sure the child restraint is properly leveled as explained on page 27.

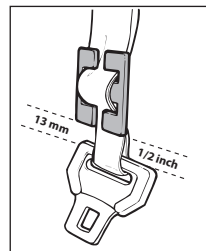
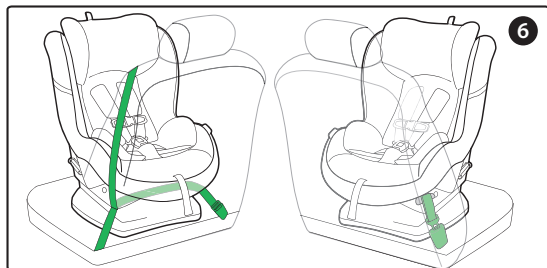
Verify that the child restraint is secure. A secure child restraint will not move more than 1 inch near the seat belt anchors.

Use of a locking clip

If the lap/shoulder belt in your vehicle requires a locking clip according to page 19, Primo Viaggio Convertible is provided with one in the tether compartment (page 12).

To install the locking clip, hold the shoulder strap and lap belt together just above the buckle. Unbuckle the belt while holding the straps. Hook the locking clip around both straps as shown.

Leave 1/2 inch space between the clip and latch. Re-buckle the belt.



Installing your child restraint in the vehicle - Rear Facing mode

REAR FACING MODE USING LAP BELT (TYPE I)

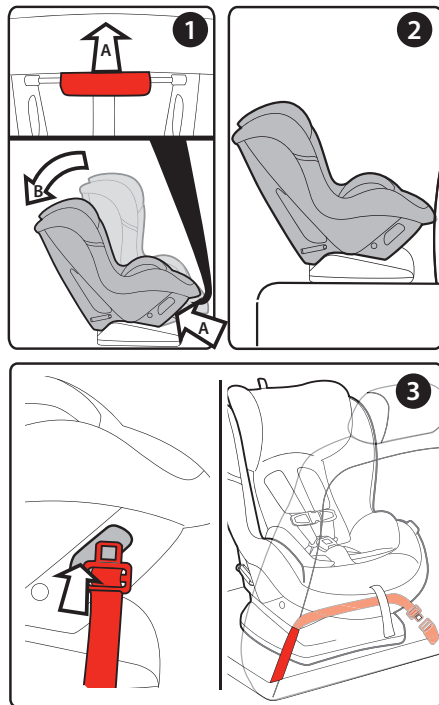
1. Recline the child restraint to the rearfacing position as shown in the picture. To recline the seat, pull the handle located below the front edge of the shell (A) as shown in detail. An audible "click" is heard when the seat is properly locked into position.

Note: for easier adjustment, lift the back of the seat slightly with your free hand to remove some weight from the mechanism.

2. Lean the reclined child restraint, unoccupied, on the selected vehicle seat.

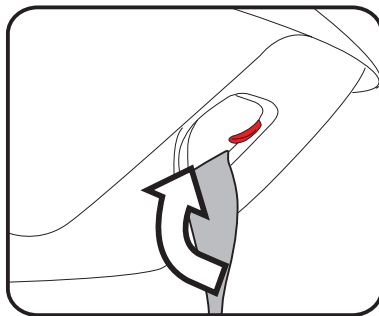
3. Pull the vehicle belt at full available length and thread through the openings under the seat area as shown in the picture.

Note: for easier threading, turn the seat at a 45 degree angle, thread the latch plate through the first opening, reach under the front of the seat and thread through the second opening.



Installing your child restraint in the vehicle - Rear Facing mode

IMPORTANT: check inside the shell openings; verify that the belt is placed as shown in the picture.



Installing your child restraint in the vehicle - Rear Facing mode

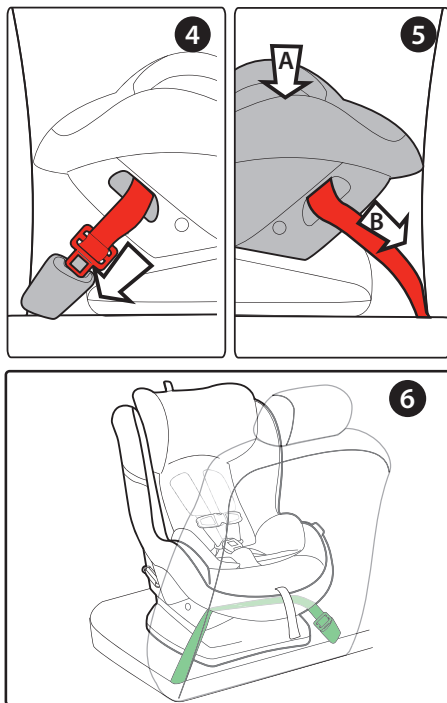
4. Buckle the vehicle belt and check that it is threaded below the adjuster strap and not entangled with it.

5. Push the seat firmly into the vehicle seat (A) and pull the vehicle belt (B) in order to tighten the seat, eliminating any slack.

6. The picture shows the correct belt path when the seat is attached to the vehicle using a lap belt.

Once the installation is completed check that the seat is properly levelled following the section on page 27.

Verify that the child restraint is secure. A secure child restraint will not move more than 1 inch near the seat belt anchors.

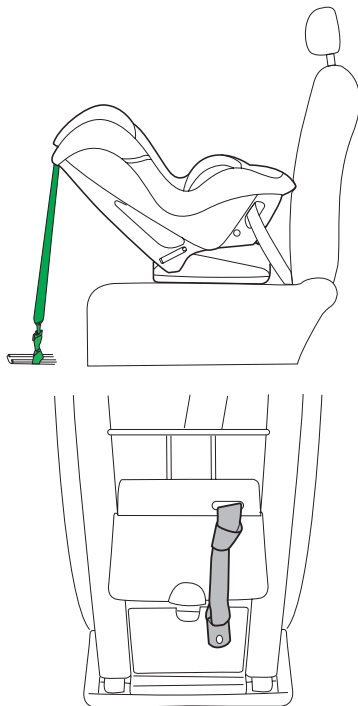


Installing your child restraint in the vehicle - Rear Facing mode

USING THE TETHER IN REAR FACING MODE

Peg Perego always recommends using the rear facing tether if the vehicle has the proper anchor point. The tether can prevent excessive rotation in rear facing mode in both frontal and rear end crashes. Install the rear facing tether as follows.

- 1.** Remove the tether hook and the tether strap. From the rear pouch (page 25).



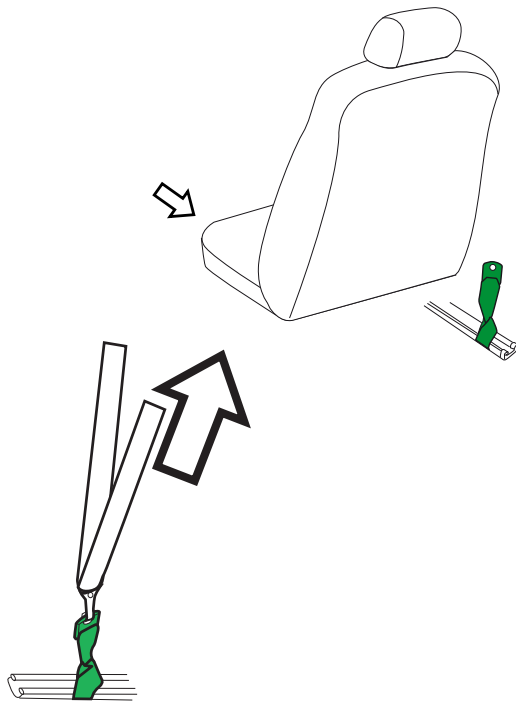
Installing your child restraint in the vehicle - Rear Facing mode

2. Attach the rear facing strap to the vehicle front seat rail. If your vehicle has a plastic seat rail cover, you may want to remove it to gain better access to the seat rail. Wrap the strap around the rail then thread the metal plate through the loop so it points upward as shown.

3. Attach the child restraint tether hook to the plate and pull the free end of the tether strap until it is free.

Note: Too much tension in the tether strap will change the seat back angle. After removing the slack from the tether, check to see that the seat back angle is correct.

If your vehicle has designated anchors for a tether strap used in rear facing mode, do not use the additional rear facing tether strap.

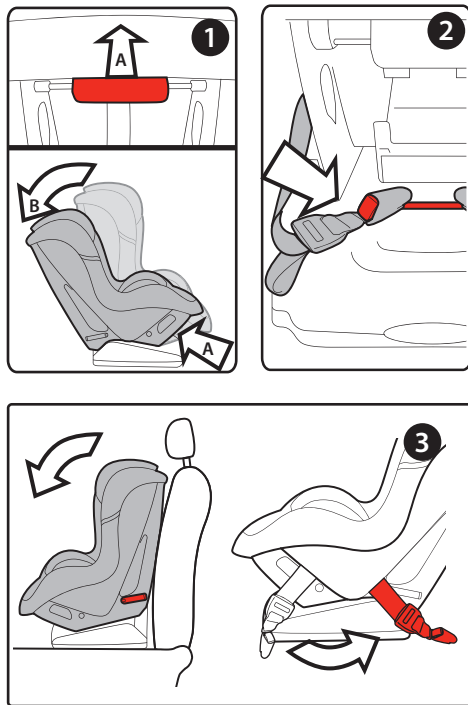


Installing your child restraint in the vehicle - Forward Facing mode

Important! Remove newborn filler cushion in forward facing mode (see page 55).

FORWARD FACING MODE USING LATCH SYSTEM

- 1.** Recline the child restraint pulling the handle located below the front edge of the shell (A) as shown in detail. This will make access to the latch storage area easier.
- 2.** Disconnect the latch straps from the storage bar by pushing on the red button and pulling the straps at the same time.
- 3.** Pull the handle and move the child restraint to the upright position. You should hear a "click" when locked in the upright position. Lean the child restraint on the vehicle seat making sure that the lock off clips are closed. Take the LATCH strap from front to rear sliding the straps along their tubing.



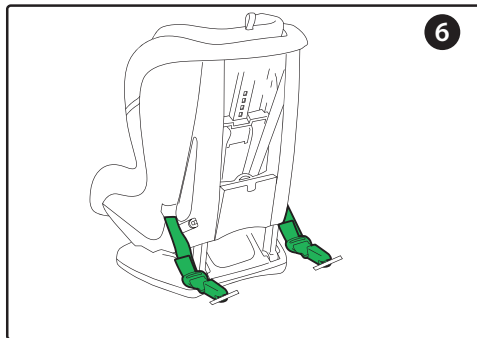
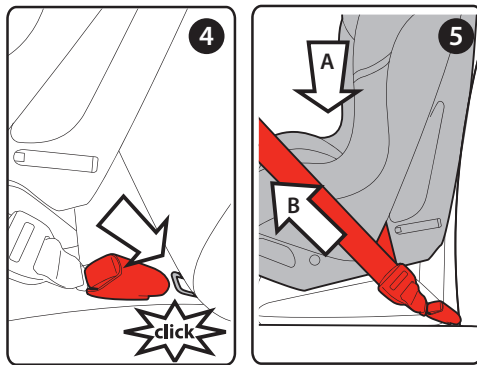
Installing your child restraint in the vehicle - Forward Facing mode

4. Attach the lower connectors to the lower anchors of your vehicle located at the joint line between seat and backrest. Check your vehicle owner's manual to learn what is the best place for your car . When the LATCH straps are connected to the lower anchors, an audible click will be heard. If this is not the case, repeat the operation and double check that the latch is attached and working by trying to pull the lower connector away from the lower anchor.

5. Push down the child restraint (A) into the seat with your own body weight and at the same time pull the strap ends (B) in order to tighten the latch straps. Check that the connectors are evenly tightened and that the seat is not leaning sideways.

6. Picture shows the correct strap path when the child restraint is attached to the vehicle using the LATCH connectors.

Verify that the child restraint is secure. A secure child restraint will not move more than 1 inch near the LATCH anchors.



Installing your child restraint in the vehicle - Forward Facing mode

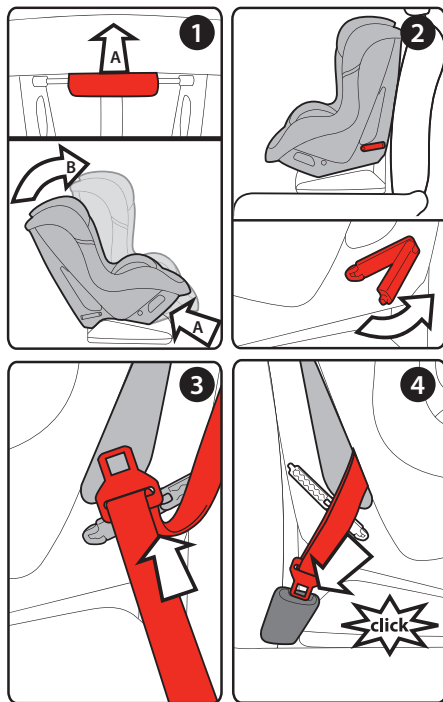
IMPORTANT NOTE: Unless where specified differently, lower anchors (LATCH) may be used for a child whose weight is less than 40 lbs. However most vehicle lower anchors can withstand much greater forces. Please, check your vehicle owner's manual or contact the vehicle manufacturer in order to determine what the weight limit is for the use of lower anchors. When the weight of the child is beyond these limits, the vehicle seatbelt must be used to install the child restraint properly and securely.

Installing your child restraint in the vehicle - Forward Facing mode

Important! Remove newborn filler cushion in forward facing mode (see page 55).

FORWARD FACING MODE USING LAP/SHOULDER BELT (TYPE II)

1. Before installing the child restraint, make sure that the backrest is in the upright position or adjust it using the handle below the front edge of the shell (A) as shown in detail.
2. Lean the upright child restraint, unoccupied, on the selected vehicle seat. Make sure that the LATCH straps are stored in their proper location (page 39 - picture2) and that the rear openings in the structure are free and ready for use. Open the lock off clips on both sides as shown in the picture.
3. Pull the vehicle belt at full available length and thread both the lap and shoulder portions of the belt through the openings in the structure behind the child restraint as shown in the picture.
4. Buckle the vehicle belt and check that the vehicle belts are both threaded through the openings, free of any entanglement.



Installing your child restraint in the vehicle - Forward Facing mode

5. Push the child restraint firmly into the vehicle seat and pull the vehicle belt eliminating any slack. While pushing the seat down (A), pull the lap portion of the belt from the fixed point toward the buckle (B). Then pull the diagonal portion of the belt (C).

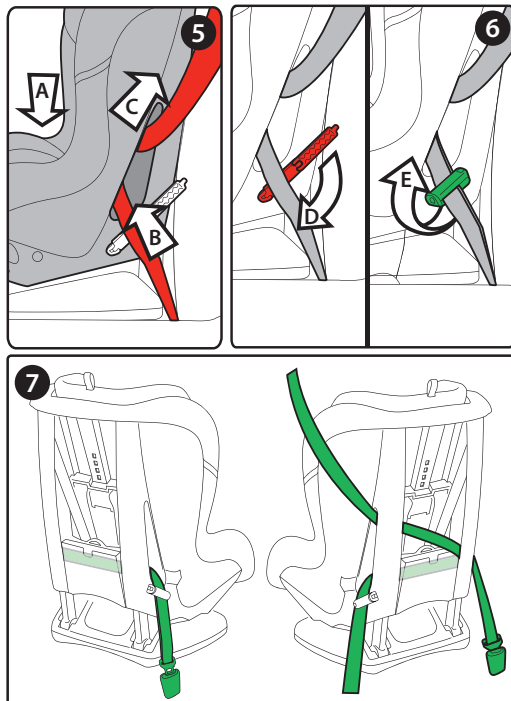
6. Close the lockoff clip following the procedure shown in picture (D and E).

Make sure that only the lap portion of the belt passes through the opened lockoff clip on the side where the shoulder strap goes up to the retractor (picture 6).

7. Open the lockoff clip on the buckle side. Make sure that both the lap and shoulder belts go through the lockoff near the buckle. Close the lockoff clip following the procedure shown in picture 6 (D and E).

Verify that the child restraint is secure. A secure child restraint will not move more than 1 inch near the seat belt anchor.

Important Note: The lock off clips located on the side of the Convertible seat are used to enhance the stability during normal use. The lock offs are not designed to replace an automatic locking retractor or a locking latch plate.



Installing your child restraint in the vehicle - Forward Facing mode

Important! Remove newborn filler cushion in forward facing mode (see page 55).

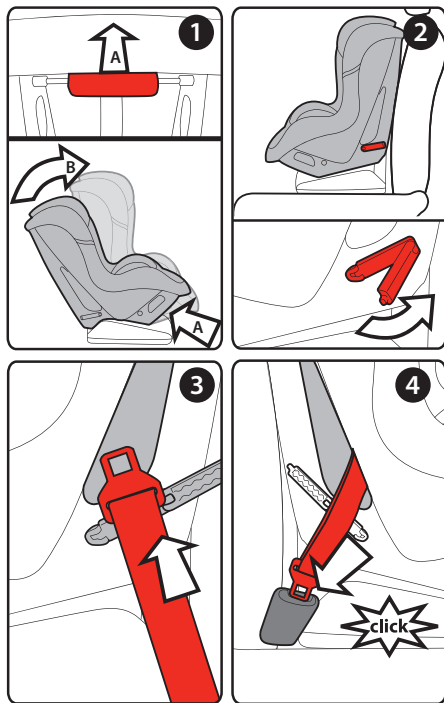
FORWARD FACING MODE USING LAP BELT (TYPE I)

1. Before installing the child restraint in the vehicle, make sure that the backrest is in the upright position or adjust it using the handle located below the front edge of the shell (A) as shown in detail.

2. Lean the upright child restraint, unoccupied, on the selected vehicle seat. Make sure that the LATCH straps are stored in their proper location (page 39 - picture 2) and that the rear openings in the structure are free and ready for use. Open the lock-off clips, as shown in the picture.

3. Pull the vehicle belt at full available length and thread the belt through the openings in the structure behind the child restraint as shown in the picture.

4. Buckle the vehicle belt and check that the vehicle belt is free of any entanglement.



Installing your child restraint in the vehicle - Forward Facing mode

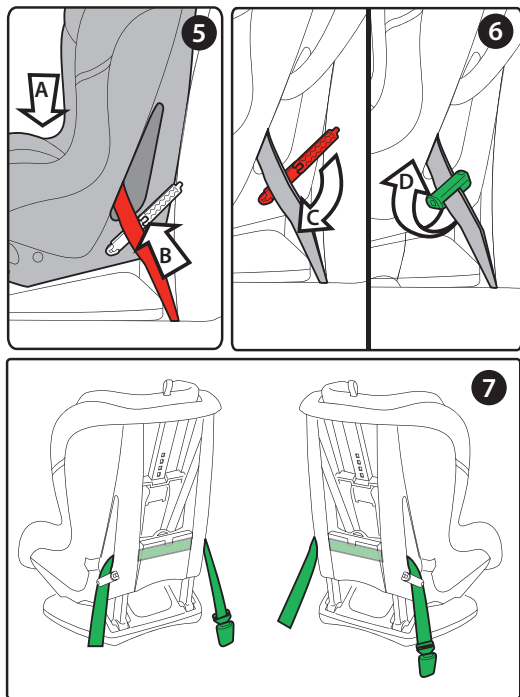
5. Push the child restraint firmly into the vehicle seat (A) and pull the vehicle belt (B) in order to tighten the seat, eliminating any slack.

6. Make sure that the belt passes through the opened lockoff clips and then close them on both sides following the procedure shown in picture (C and D).

7. Picture shows the correct belt pattern when the product is installed in the forward facing mode using a lap belt.

Verify that the child restraint is secure. A secure child restraint will not move more than 1 inch near the seat belt anchors.

Important Note: The lock off clips located on the side of the Convertible seat are used to enhance the stability during normal use. The lock offs are not designed to replace an automatic locking retractor or a locking latch plate.



Installing your child restraint in the vehicle - Forward Facing mode

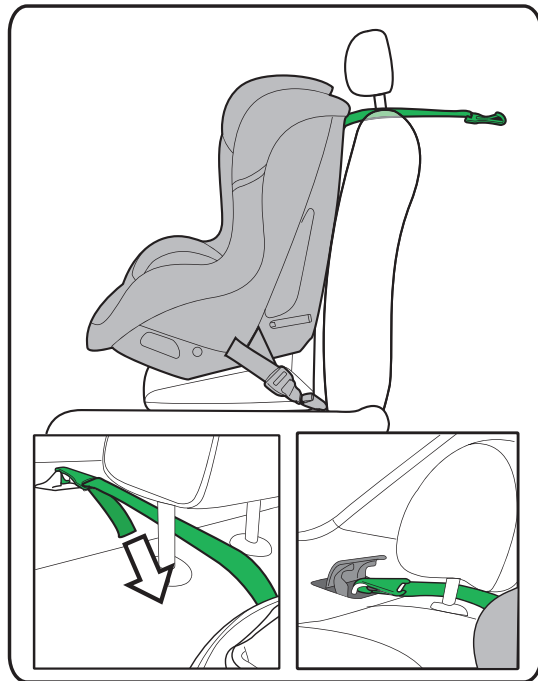
USING THE TETHER IN FORWARD FACING MODE

The tether prevents excessive rotation of the seat in a crash. It reduces the risk for the child to impact objects in front of him.

Remove the tether hook from the rear pouch (page 25).

Attach the tether hook to the designated tether anchor and pull the free strap until the tether is fully tensioned and free of any slack. Pictures show the tether anchor located on the rear shelf.

Alternative tether locations are illustrated at page 24.



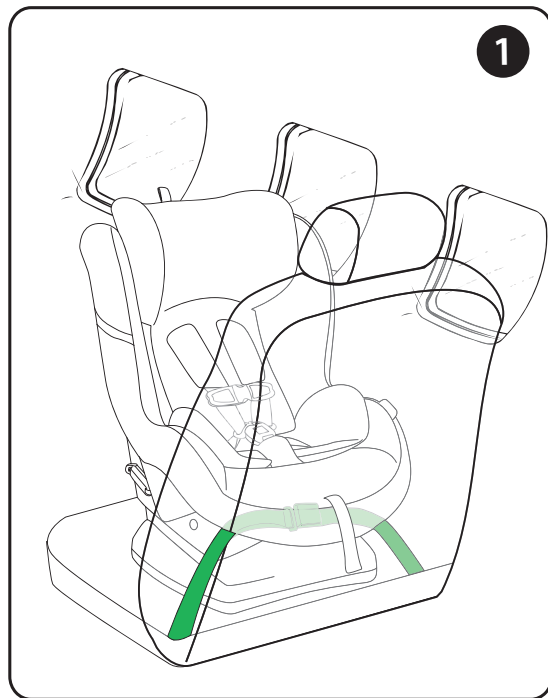
Installing your child restraint in an aircraft

This child restraint is certified for use in an aircraft. Most airlines should allow the use of a restraint which is labelled for use according to FAA regulations.

However, due to the size and weight of the Primo Viaggio SIP Convertible, it is recommended that airline is contacted for further information prior to booking or flight.

Aircraft seatbelts are waist only type (Type I belt).

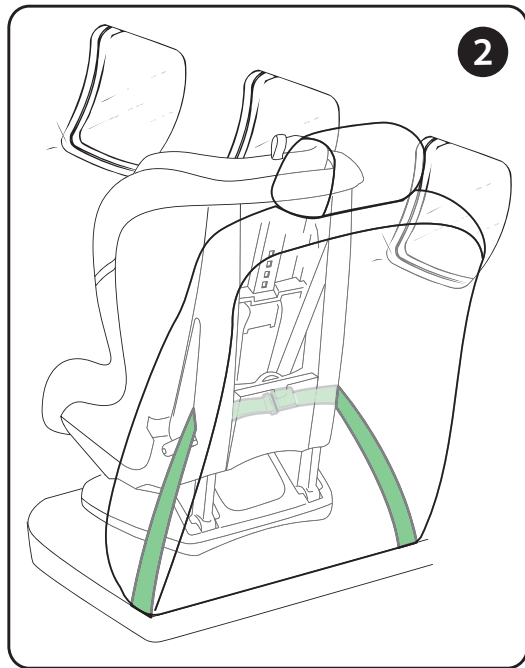
1. Installation in rear facing mode: please refer to the section on page 34 for proper belt fit.



Installing your child restraint in an aircraft

2. Installation in forward facing mode: please refer to page 36 for proper belt fit. Use of lockoff clips is not required.

After installation make sure that the child restraint is properly levelled and safely firm on the aircraft seat. Should you need further help, please contact aircraft crew.



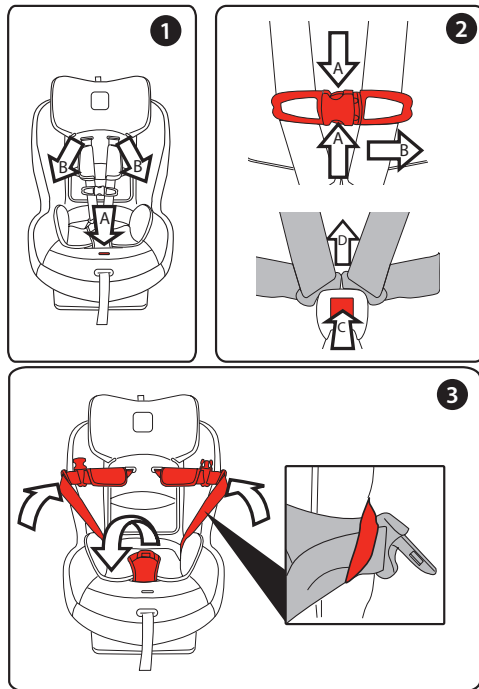
Securing your child into the child restraint

HARNES USE AND ADJUSTMENT

1. This child restraint uses a 5 point harness system to secure your child. Before placing your child in the seat, push the release button (A) and pull the shoulder straps (B) as shown in the picture.

2. Open the buckle by pushing on the red button (C) as shown in the picture. Open the chest clip following the procedure shown in the picture (A and B).

3. Insert the buckle tongues into the side bands and pull the crotch portion of the harness assembly in forward position, to make room for your child. Make sure that the seating area is free of any harness or other objects.



Securing your child into the child restraint

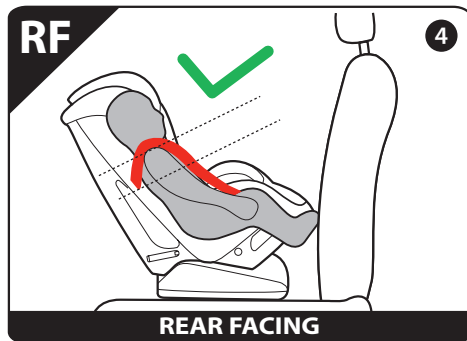
4. Put your child in the child restraint with his/her bottom and back flat against the child restraint.

Bring the two shoulder straps over your child's shoulders. Make sure that the straps are not twisted behind the backrest or over your child's chest.

Check that the harness is at the right shoulder height.

When the child restraint is used in rear facing mode, the correct shoulder position is when the shoulder straps are located at or just below shoulder level, as shown in the picture.

5. When the child restraint is used in forward facing mode, the correct shoulder position is when the shoulder straps are located at or just above shoulder level, as shown in the picture.



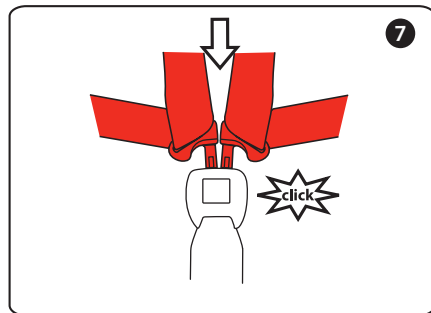
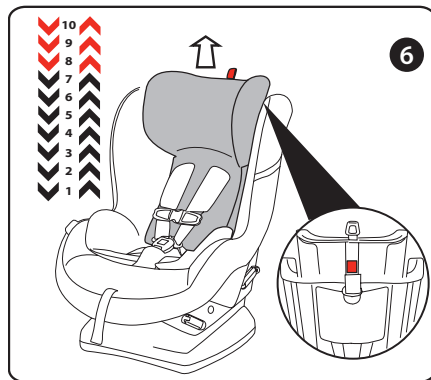
Securing your child into the child restraint

6. To adjust the shoulder strap level, from bottom to top, pull the ring located on top of headrest until the panel is disengaged and able to move. Once the desired position is reached, make sure that the panel is properly latched.

To adjust the shoulder strap level from top to bottom pull the ring with one hand and push the panel down with the other hand at the same time. Check that the panel is properly latched.

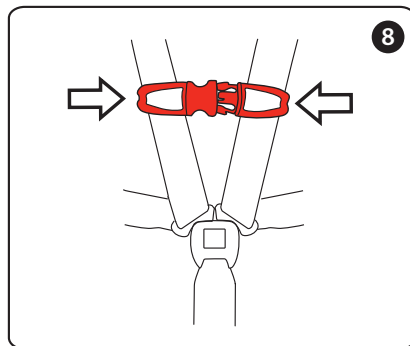
Note: The lower 7 head panel positions can be used in the rear facing mode. Positions 8, 9 and 10 should only be used in the forward facing mode. Check maximum rear facing head panel height behind the seat (detail in picture 6).

7. Insert both latch plates into the buckle until you hear them click. Pull on the straps to make sure that both plates are latched securely.

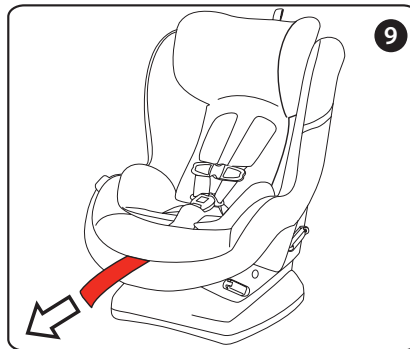


Securing your child into the child restraint

8. The harness is equipped with a chest clip. This device is used in order to guarantee that the shoulder harness is positioned correctly on the shoulder, preventing the risk of the straps falling down the shoulder in an accident. To close the chest clip push the two parts together as shown.



9. To tighten the harness, pull the adjuster strap at the bottom of the child restraint until strap is snug. Make sure you leave one finger width between the harness and your child's collar bone.

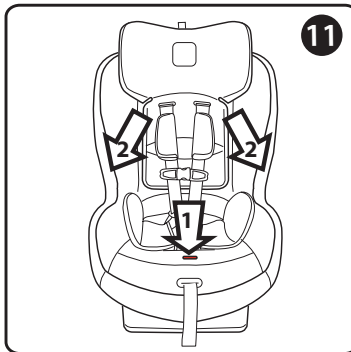
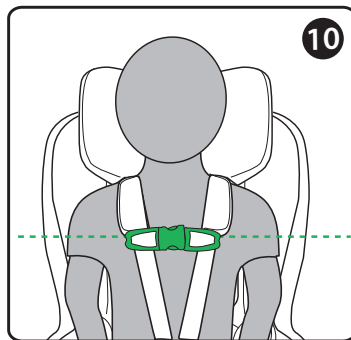


Securing your child into the child restraint

10. When the harness is tightened, check that the chest clip is at arm pit level. If necessary remove the shoulder pads (attached with Velcro) as they are not considered as safety features.

Important! A snug strap should not allow any slack. It lies in a relatively straight line without sagging. It does not press on the child's flesh or push the child's body into an unnatural position.

11. To loosen the harness, press and hold the harness adjuster button inside the slot located at your child's feet and pull the top harness as shown in the picture. To undo the latch plates, press the red button and pull the latches up.



Securing your child into the child restraint

CROTCH STRAP ADJUSTMENT

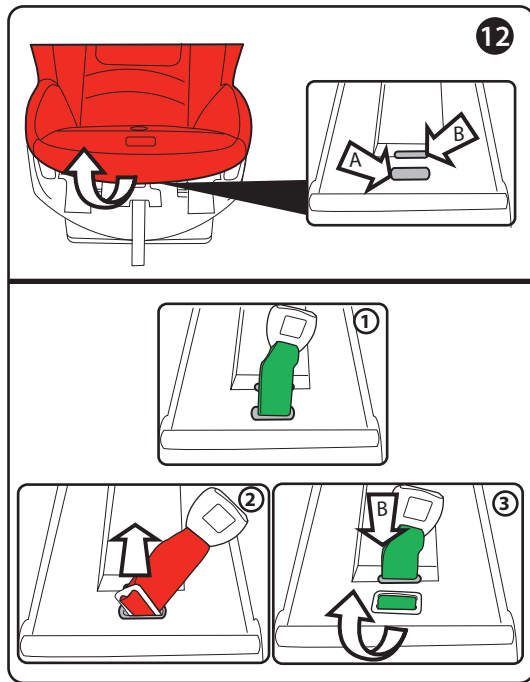
12. Your Primo Viaggio SIP Convertible is equipped with a repositionable crotch strap. The child restraint is assembled with the crotch located in the forward position (A). The crotch strap can be repositioned to position (B) which may be more suitable for smaller infants.

To change position, lift the upholstery so that the crotch attachment is visible (fig.1). Pull the buckle through the buckle pad and through the seat upholstery.

Remove the crotch metal plate from above (fig.2).

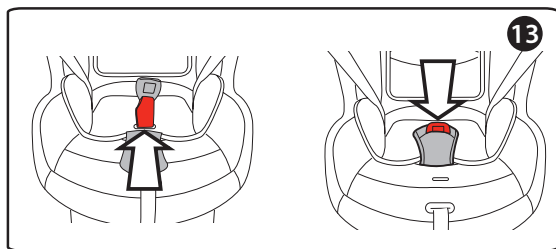
Insert the metal plate from above in position B, then turn the strap below the shell so that the metal plate is pulled out and locked in position A (fig.3)

Pull the buckle back through the seat upholstery and through the buckle pad.



Securing your child into the child restraint

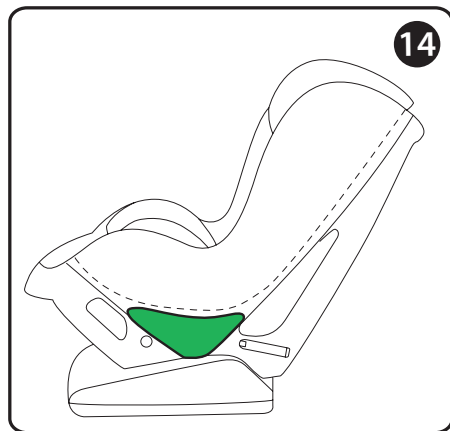
13. To complete the operation, put the soft cover on the crotch in the new position by sliding the buckle through the openings in the upholstery and in the crotch protection



INFANT FILLER CUSHION

14. Primo Viaggio Convertible is supplied with a specifically designed filler cushion for smaller infants. The cushion can help provide better harness fit and keep the head properly positioned between the side wings of the head pad.

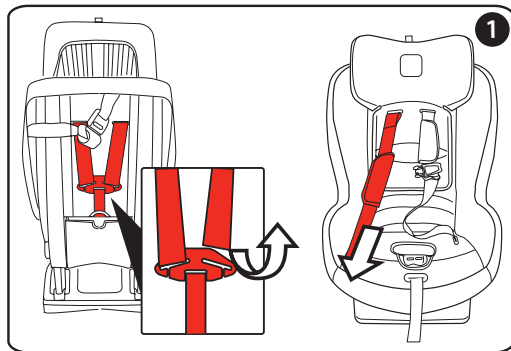
Important note: the infant filler cushion is designed for use in rear facing mode only. It must be removed when the seat is used in the forward facing mode.



Cleaning and maintenance

Your child restraint requires a minimum of cleaning and maintenance. Do not clean with harsh products or solvents. Keep moving parts clean. In case, clean plastic parts with a damp cloth. Do not use water with harness and latching mechanisms. Protect it from extreme cold, water, rain and sun exposure. Prolonged exposures to these elements can change the colors in the material but also change their mechanical properties. Store it in a dry area if not used for long periods. Warning! Do not use or purchase the child restraint 7 years after the production date labelled on the seat or shell. The upholstery is likely to be removed and cleaned frequently. Follow the procedure below to remove the fabric and reassemble it properly. Check the child restraint features before disassembly and make sure that the same features are still working once it is set up for use again. Extra care is required when removing padding to avoid breaking the white EPS panels on the product.

1. Pull the head panel all the way up. Detach shoulderbelts from rear metal plate in the back of the child restraint. Turn it around and pull the straps from the openings at shoulder level.

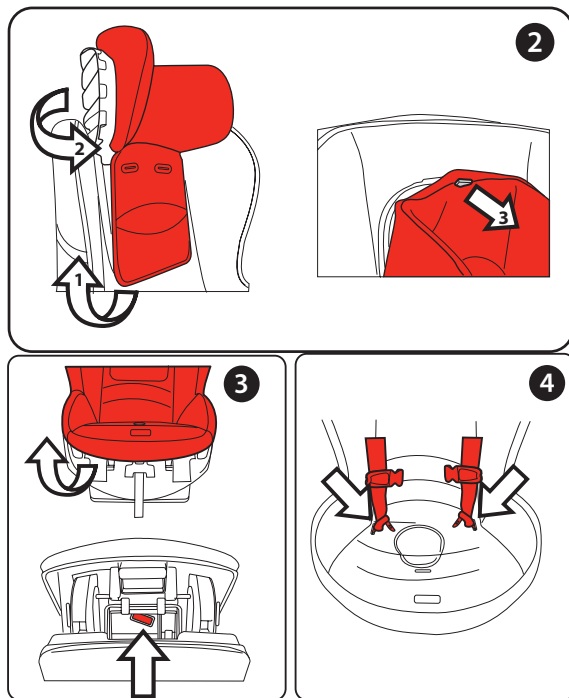


Cleaning and maintenance

2. Remove head panel padding following the procedure (1, then 2). Take care of the soft white EPS insert.

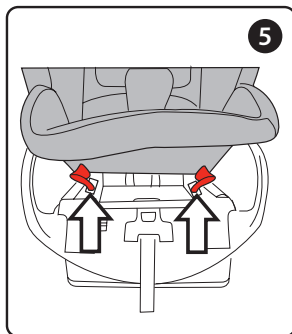
3. Undo the lower part of upholstery and remove it from the crotch strap. The crotch portion of the harness does not need to be removed.

4. Pull the bottom part of the upholstery upward making sure that the shoulder belts are let through the side openings.

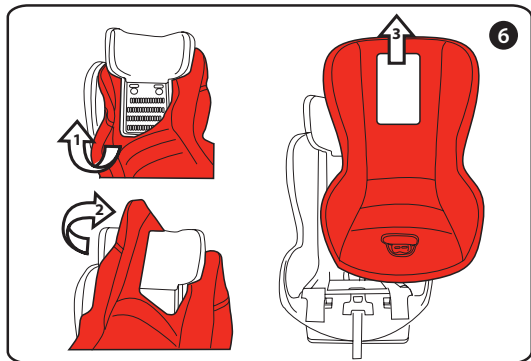


Cleaning and maintenance

5. Check that the adjuster is free of food particles or debris that could prevent correct functioning.

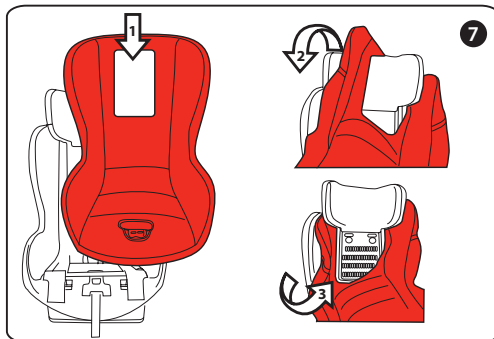


6. Remove the padding from bottom to top making sure that the side impact wings white EPS are not bent or broken in the process.

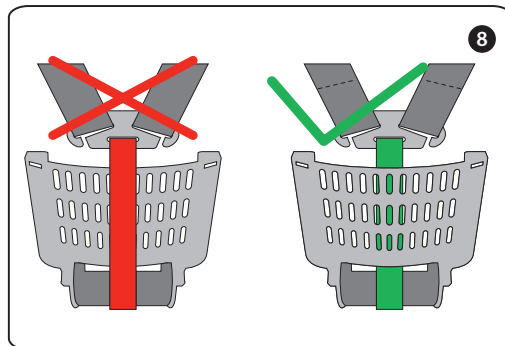


Cleaning and maintenance

7. To reassemble the upholstery, start from the head panel opening as shown in the sequence. Then put the head panel cover on. Pull shoulder straps up through slots in the bottom of the upholstery. Pull crotch strap through hole in upholstery. Push shoulder straps through head pad.



8. Properly connect shoulder straps. Make sure that the harness is reconnected properly to the rear plate. The central adjuster strap must pass behind the plastic shield as shown.



Cleaning and maintenance

MAINTENANCE OF THE PADDING

Brush the fabric parts to remove dust.

- Machine wash at a maximum of 90 F (30°C) with a delicate wash setting and short spin cycle.
- Do not use chlorine bleach.
- Do not iron.
- Do not dry clean.
Do not remove stains with solvents.
- Do not tumble dry.



How to tell if the seat has been in a crash

The Primo Viaggio Convertible can withstand minor crashes without any damage. If the child restraint has been in a crash, you must determine if it is suitable for further use. First review the five guidelines listed below and then refer to the next section titled "clear signs the child restraint has been in a crash".

What defines a minor crash? A minor crash is one in which **ALL** of the following apply:

- The vehicle was able to be driven away from the crash site.
- The vehicle door nearest to the car seat was not damaged.
- None of the passengers in the vehicle sustained any injuries in the crash.
- The vehicle air bags did not deploy during the crash.
- There is no visible damage to the car seat.

If any one of these five statements apply, the seat may be damaged and should not be used. If these statements do not apply, refer to the next section to check for hidden damage.

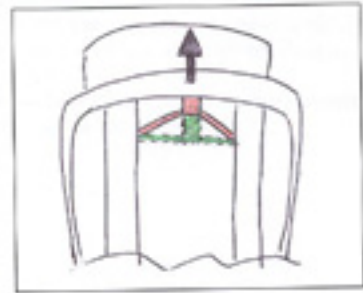
Clear signs the child restraint has been in a crash.

Peg Perego does not recommend purchasing used seats for which there is no known history. A child restraint can be damaged in a vehicle crash, and may not be suitable for further use after a vehicle crash.

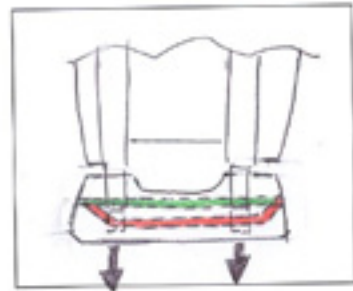
The Primo Viaggio Convertible has energy absorbing features that reduce forces on the child passenger during a vehicle crash. These features can only absorb energy one time. If any of these features show damage as shown below, the entire seat must be replaced.

How to tell if the seat has been in a crash

1. Tether Bar: The tether bar is located on the back of the seat shell near the top (open the tether plastic storage pouch if so equipped). The tether bar will bend during a crash. The tether bar should be straight (green illustration). If the bar is bent (red illustration), the seat has been in a crash and should be replaced.



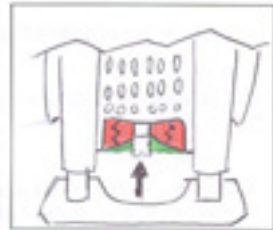
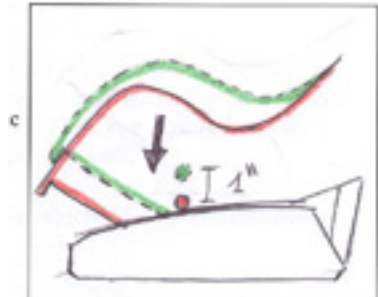
2. Rear Bar: The rear bar runs through the rear of the base. The rear bar will bend during a crash. The bar should be straight (green illustration). If the rear bar is bent (red illustration), the seat has been in a crash and should be replaced.



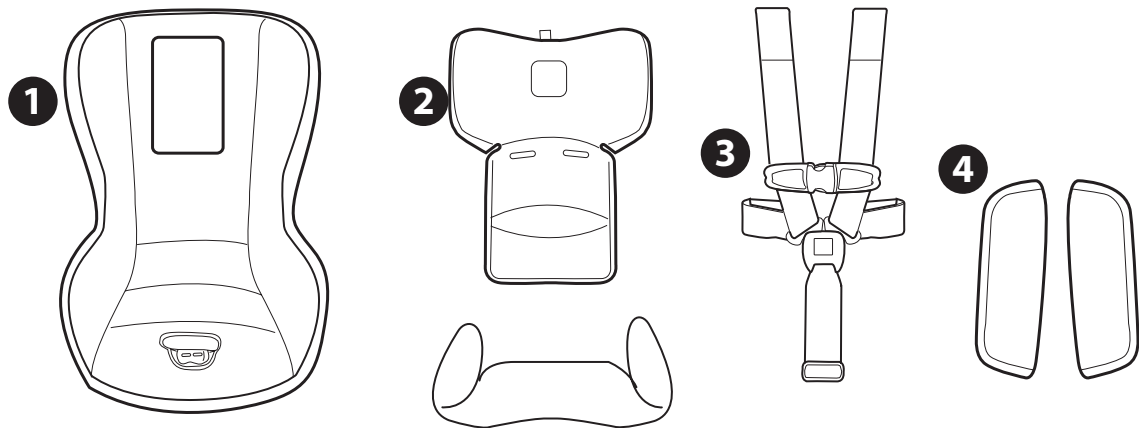
How to tell if the seat has been in a crash

3. Pivot Bolts: The pivot bolts are located on each side of the seat. The pivot bolts will move closer to the base during a crash. There should be about 1 inch of space between the pivot bolt and the top of the base. (green illustration). If the pivot bolt is located at or near the top of the base (red illustration), the seat has been in a crash and should be replaced.

4. SAFE Device: The Shock Absorbing Foam Element (SAFE) device is located on the bottom rear part of the shell above the base. The SAFE device will deform during a crash. The SAFE device should be straight from side to side (green). If the SAFE device has a crease or cracks in it (red), the seat has been in a crash and should be replaced.



Replacement Parts



- 1) BSACOB*
- 2) BRICOB*
- 3) MUCI0076GR
- 4) BAKCOB*

NOTE: Spare parts available in different colors* to be specified when ordering.